

THIS MONTH IN STUDENT LIFE

APRIL 2017



.....IMPORTANT DATES.....

BROWN BAG

Alzada Magdalena, 2001 AIMC graduate, will be on campus to share what she has learned about building and maintaining an acupuncture practice. Free for all students and faculty. Learn about Alzada at the AIMC [**Friday, April 7th 12pm - 1pm**](http://www.aimc.edu/so/4LhzQh6o/click?w=LS0tDQo2YTczNmQxOC01YmM3LTQ4YmMtYTdlMy1jNDlmYTJkNTE5MzcNCmh0dHBzOi8vd3d3LmFpbWMuZWR1L3NpbmdsZS1wb3N0LzlwMTcvMDMvMTQvQUINQy1CZXJrZWxleS1HcmFkdWF0ZS1TcGxpdHMtSGVvLVRpbWUtQmV0d2Vlbi1Ud28tQnVzeS1QcmFjdGljZXMtQS1GYXJtDQotLS0)news page.</p></div><div data-bbox=)



STUDENT COUNCIL MEETING

Meet with your student representatives to hear updates, discuss issues & voice your concerns.

Thursday, April 6, 12pm - 1pm. Student Lounge

DECOMPRESSION WEEK

Student Council will be hosting decompression week to support students as they finish out the term. B12 shots, tea/snacks/chocolate, and a quiet space will be available during the week. Keep an eye out for sign-ups and locations . . .

Mon April 17th - Thurs April 20. Location TBD

AUGUST CALE APPLICATION DEADLINE

If you plan to take the CALE in August, please ensure that you have turned in your "Info Release for Graduating Students" form to the Registrar no later than Friday, April 14 so that we can send your transcripts to CALE by the April 21st Application Deadline. Please refer to CAB's [website](http://www.aimc.edu/so/4LhzQh6o/click?w=LS0tDQo4NDIjN2U0NS1kZGRkLTRIZDgtZmlyZS0yNmI4YTE0MDYwNDQNCmh0dHA6Ly93d3cuYWN1cHVuY3R1cmUuY2EuZ292L3B1YnNfZm9ybXMvYXVnMjAxN19leGFtX2NhbnVzGFYLnBkZg0KLS0t) ([http://www.aimc.edu/so/4LhzQh6o/click?](http://www.aimc.edu/so/4LhzQh6o/click?w=LS0tDQo4NDIjN2U0NS1kZGRkLTRIZDgtZmlyZS0yNmI4YTE0MDYwNDQNCmh0dHA6Ly93d3cuYWN1cHVuY3R1cmUuY2EuZ292L3B1YnNfZm9ybXMvYXVnMjAxN19leGFtX2NhbnVzGFYLnBkZg0KLS0t)

[w=LS0tDQo4NDIjN2U0NS1kZGRkLTRIZDgtZmlyZS0yNmI4YTE0MDYwNDQNCmh0dHA6Ly93d3cuYWN1cHVuY3R1cmUuY2EuZ292L3B1YnNfZm9ybXMvYXVnMjAxN19leGFtX2NhbnVzGFYLnBkZg0KLS0t](http://www.aimc.edu/so/4LhzQh6o/click?w=LS0tDQo4NDIjN2U0NS1kZGRkLTRIZDgtZmlyZS0yNmI4YTE0MDYwNDQNCmh0dHA6Ly93d3cuYWN1cHVuY3R1cmUuY2EuZ292L3B1YnNfZm9ybXMvYXVnMjAxN19leGFtX2NhbnVzGFYLnBkZg0KLS0t)) for details on the application process

Fri, April 14th, Registrar | Fri April 21st, CALE

EARTH DAY

Check out one of the many [Earth Day Events](http://www.aimc.edu/so/4LhzQh6o/click?w=LS0tDQo4NDIjN2U0NS1kZGRkLTRIZDgtZmlyZS0yNmI4YTE0MDYwNDQNCmh0dHA6Ly9tZWRpYS53aXguY29tL3VnZC85MWFfYTZfNzg2NTMzOTEwNjQ1NDdiMDk3ODVhYzRlZTAwMDI1YWluY292L3B1YnNfZm9ybXMvYXVnMjAxN19leGFtX2NhbnVzGFYLnBkZg0KLS0t) ([http://www.aimc.edu/so/4LhzQh6o/click?](http://www.aimc.edu/so/4LhzQh6o/click?w=LS0tDQo4NDIjN2U0NS1kZGRkLTRIZDgtZmlyZS0yNmI4YTE0MDYwNDQNCmh0dHA6Ly9tZWRpYS53aXguY29tL3VnZC85MWFfYTZfNzg2NTMzOTEwNjQ1NDdiMDk3ODVhYzRlZTAwMDI1YWluY292L3B1YnNfZm9ybXMvYXVnMjAxN19leGFtX2NhbnVzGFYLnBkZg0KLS0t)

Saturday, April 22nd (and other dates)

GRADUATION DEADLINE

If you are scheduled to graduate at the end of this term (Winter) or the next (Summer), be sure to register for the June 4th graduation ceremony on the [AIMC website](http://www.aimc.edu/so/4LhzQh6o/click?w=LS0tDQo5ZTRhMzlmZC1iYmU4LTQxM2YtMjUwMC1INWM1NGY1YzZjN2QNCmh0dHBzOi8vd3d3LmFpbWMuZWR1L2dyYWV1YXRpbmctc3R1ZGVudHMNCi0tLQ) ([http://www.aimc.edu/so/4LhzQh6o/click?](http://www.aimc.edu/so/4LhzQh6o/click?w=LS0tDQo5ZTRhMzlmZC1iYmU4LTQxM2YtMjUwMC1INWM1NGY1YzZjN2QNCmh0dHBzOi8vd3d3LmFpbWMuZWR1L2dyYWV1YXRpbmctc3R1ZGVudHMNCi0tLQ)

[w=LS0tDQo5ZTRhMzlmZC1iYmU4LTQxM2YtMjUwMC1INWM1NGY1YzZjN2QNCmh0dHBzOi8vd3d3LmFpbWMuZWR1L2dyYWV1YXRpbmctc3R1ZGVudHMNCi0tLQ](http://www.aimc.edu/so/4LhzQh6o/click?w=LS0tDQo5ZTRhMzlmZC1iYmU4LTQxM2YtMjUwMC1INWM1NGY1YzZjN2QNCmh0dHBzOi8vd3d3LmFpbWMuZWR1L2dyYWV1YXRpbmctc3R1ZGVudHMNCi0tLQ))_by 4/10 .

Monday, April 10th

PARKING PERMITS AVAILABLE

All vehicles parked in the student lot need to have a valid parking permit. Permits are \$95 per term. Starting 4/17, permits can be purchased from Connie in the Accounting Office in-person or via phone. Please have the following information ready: License plate #, and the make, model, and color of your vehicle.

Monday, April 17th. Accounting office

INCOMPLETE FORMS DUE

Students needing additional time to complete course requirements must submit an Incomplete form, signed by their instructor, to the Registrar by the last day of the term.

Saturday, April 22nd Registrar

SPRING BREAK

Enjoy your well-deserved time off. See you when classes start on Monday, May 8th!

Monday April 24th - Sunday May 7th

.....ANNOUNCEMENTS.....

REMEDIAL EXAMINATIONS <<< Important. Please Read!

Effective Summer 2017 Term, Remedial Exams will no longer be offered. Once an exam has been taken, students will not have the option to retake the test to earn a higher grade.



LIBRARY ASSISTANTS NEEDED

There will be additional shifts available on Tues & Weds in July and August. We're looking for persons who qualify for Federal Work Study and can work independently, needing little supervision for performing a myriad of tasks. If you are interested in working in the Library during Summer term, please see [Patricia](http://www.aimc.edu/so/4LhzQh6o/click?w=LS0tDQoyODhhNDQ5MC05ZjMyLTQ2MmMtYmM4NS1kMDhjYjhhMTAyNTQNCm1haWx0b2pw d2FyZEBhaW1jLmVkdQ0KLS0t) (<http://www.aimc.edu/so/4LhzQh6o/click?w=LS0tDQoyODhhNDQ5MC05ZjMyLTQ2MmMtYmM4NS1kMDhjYjhhMTAyNTQNCm1haWx0b2pw d2FyZEBhaW1jLmVkdQ0KLS0t>).

REMINDER ABOUT INCOMPLETES

As we are in the final stretch of the Winter term, please evaluate your need for extra time to complete coursework. You must submit a request for an Incomplete grade by the dates below to be eligible for additional time for work completion. Please remember that the allotted time for turning in outstanding work has changed from 4 weeks to 2 weeks. Incomplete Request forms must be turned in by the following dates to be considered: Clinic- April 6 | Didactic- Last day of term, April 22

GRADUATION TICKETS

Students wishing to attend the June 4th graduation ceremony can purchase tickets by visiting the [graduation page](http://www.aimc.edu/so/4LhzQh6o/click?w=LS0tDQpmZWE5YjY0Yi1INjkLTQyZjEtZGExMi1iOTZjZDk1ZDg1ODkNCmh0dHBzOi8vd3d3LmFpbWMuZWR1L2dyYWR1YXRpbmctc3R1ZGVudHMNCi0tLQ) (<http://www.aimc.edu/so/4LhzQh6o/click?w=LS0tDQpmZWE5YjY0Yi1INjkLTQyZjEtZGExMi1iOTZjZDk1ZDg1ODkNCmh0dHBzOi8vd3d3LmFpbWMuZWR1L2dyYWR1YXRpbmctc3R1ZGVudHMNCi0tLQ>) on the AIMC Website. All guests, including children 5 and over, need a ticket to enter the venue. The website also contains additional information about the ceremony



BECOME AN AIMC AMBASSADOR

Join our Ambassador Program. Explore the benefits of talking to your former colleagues/friends about why you are studying acupuncture. Visit Julie Scheff in the Admissions Department or email ([http://www.aimc.edu/so/4LhzQh6o/click?](http://www.aimc.edu/so/4LhzQh6o/click?w=LS0tDQowZDMYnJU4MC02MGNjLTQyZDgtNjA1Yy03YjkYTc4M2UzNmQNCm1haWx0bzphZG1pc3Npb25zQGFpbWMuZWR1DQotLS0)

[w=LS0tDQowZDMYnJU4MC02MGNjLTQyZDgtNjA1Yy03YjkYTc4M2UzNmQNCm1haWx0bzphZG1pc3Npb25zQGFpbWMuZWR1DQotLS0](http://www.aimc.edu/so/4LhzQh6o/click?w=LS0tDQowZDMYnJU4MC02MGNjLTQyZDgtNjA1Yy03YjkYTc4M2UzNmQNCm1haWx0bzphZG1pc3Npb25zQGFpbWMuZWR1DQotLS0)) her to find out more

GET MARKETING NOW!

The Admissions Department wants your help to promote the clinic and the school. Here are ways you can participate today:

1. Write your clinic Bio (J-team can help you)
2. Write a testimonial about studying at AIMC Berkeley (Admissions will use for marketing materials including website)
3. Participate in an Admissions Event (next event is Thursday, March 16, 5:30-7pm)

Visit Julie Scheff in the Admissions Department or email ([http://www.aimc.edu/so/4LhzQh6o/click?](http://www.aimc.edu/so/4LhzQh6o/click?w=LS0tDQopiMjkyOThlOC1mZjRmLTQ5ZDQtZGQyZi02MTY3NDU3MmQxNjcNCm1haWx0bzphZG1pc3Npb25zQGFpbWMuZWR1DQotLS0)
[w=LS0tDQopiMjkyOThlOC1mZjRmLTQ5ZDQtZGQyZi02MTY3NDU3MmQxNjcNCm1haWx0bzphZG1pc3Npb25zQGFpbWMuZWR1DQotLS0](http://www.aimc.edu/so/4LhzQh6o/click?w=LS0tDQopiMjkyOThlOC1mZjRmLTQ5ZDQtZGQyZi02MTY3NDU3MmQxNjcNCm1haWx0bzphZG1pc3Npb25zQGFpbWMuZWR1DQotLS0)) her to find out more



WRITING ASSISTANCE

The Journalism Team can help you with overall writing support. Pop into the administrative offices for assistance with clinical bios, class papers, personal marketing, & J-team writing

Office hours: Mondays 12-1pm (Jessica)

Thursdays, 12-1pm (Gina)

..... LEARNING & JOB OPPORTUNITIES.....

CONTINUING EDUCATION

Check out the great [CE classes](http://www.aimc.edu/so/4LhzQh6o/click?w=LS0tDQpmN2Q0ZjMzMm00OGFjLTQzYTctNzA2MS0yZTRjOGE2MGU1M2ENCmh0dHBzOi8vd3d3LmFpbWMuZWR1L3dvcmtzaG9wcy1ldmVudHMNCi0tLQ) ([http://www.aimc.edu/so/4LhzQh6o/click?](http://www.aimc.edu/so/4LhzQh6o/click?w=LS0tDQpmN2Q0ZjMzMm00OGFjLTQzYTctNzA2MS0yZTRjOGE2MGU1M2ENCmh0dHBzOi8vd3d3LmFpbWMuZWR1L3dvcmtzaG9wcy1ldmVudHMNCi0tLQ)

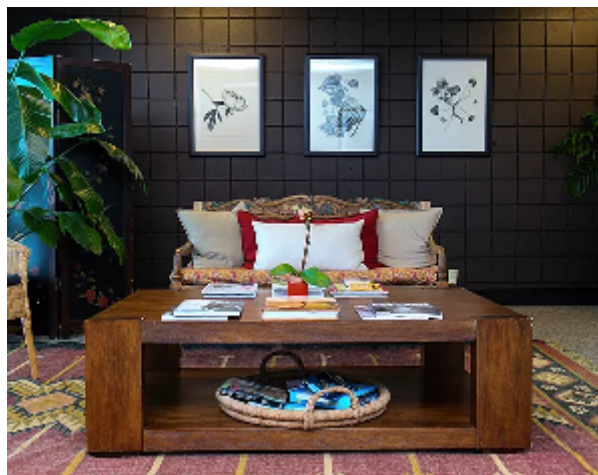
[w=LS0tDQpmN2Q0ZjMzMm00OGFjLTQzYTctNzA2MS0yZTRjOGE2MGU1M2ENCmh0dHBzOi8vd3d3LmFpbWMuZWR1L3dvcmtzaG9wcy1ldmVudHMNCi0tLQ](http://www.aimc.edu/so/4LhzQh6o/click?w=LS0tDQpmN2Q0ZjMzMm00OGFjLTQzYTctNzA2MS0yZTRjOGE2MGU1M2ENCmh0dHBzOi8vd3d3LmFpbWMuZWR1L3dvcmtzaG9wcy1ldmVudHMNCi0tLQ)) being offered in the upcoming months! We are particularly excited about Nishanga's new CE course, "The Elements of Flavor: Sweet, Sour, & Bitter." This is Part I of a 2 part series. Part II will be offered in September and will focus on pungent, salty, and umami.

JOB OPENING

Berkeley Natural Medicine is looking for acupuncture students who are interested in an office manager position. BNM is a center for natural medicine with practitioners specializing in naturopathy, Chinese medicine, massage therapy and psychotherapy. Ideal workdays are Wednesdays and Fridays, though there may be some flexibility. Hours tend to be 9am - 5:30pm. This is a paid position. Interested students should [email](mailto:)

([http://www.aimc.edu/so/4LhzQh6o/click?](http://www.aimc.edu/so/4LhzQh6o/click?w=LS0tDQozYzMxYjZkYy1iMTYwLTQ1MmltMDQ3OS04ZTg5OWNkMmM0YWMNCm1haWx0bzpiZXJrZWxleW5hdHVyYWxtZWRpY2luZUBnbWFpbC5jb20NCi0tLQ)

[w=LS0tDQozYzMxYjZkYy1iMTYwLTQ1MmltMDQ3OS04ZTg5OWNkMmM0YWMNCm1haWx0bzpiZXJrZWxleW5hdHVyYWxtZWRpY2luZUBnbWFpbC5jb20NCi0tLQ](http://www.aimc.edu/so/4LhzQh6o/click?w=LS0tDQozYzMxYjZkYy1iMTYwLTQ1MmltMDQ3OS04ZTg5OWNkMmM0YWMNCm1haWx0bzpiZXJrZWxleW5hdHVyYWxtZWRpY2luZUBnbWFpbC5jb20NCi0tLQ)) the clinic.



Questions or feedback about this newsletter can be directed to [Robbyn Kawaguchi](mailto:)

([http://www.aimc.edu/so/4LhzQh6o/click?](http://www.aimc.edu/so/4LhzQh6o/click?w=LS0tDQo1YTQ5ZDExOC02Mjg4LTRmNDItMjJjNy05OWI4Y2ZmZDMzY2INCm1haWx0bzpya2F3YWd1Y2hpQGfPb)

[w=LS0tDQo1YTQ5ZDExOC02Mjg4LTRmNDItMjJjNy05OWI4Y2ZmZDMzY2INCm1haWx0bzpya2F3YWd1Y2hpQGfPb](http://www.aimc.edu/so/4LhzQh6o/click?w=LS0tDQo1YTQ5ZDExOC02Mjg4LTRmNDItMjJjNy05OWI4Y2ZmZDMzY2INCm1haWx0bzpya2F3YWd1Y2hpQGfPb)



Acupuncture & Integrative Medicine College

2550 Shattuck Avenue,
Berkeley, CA, United States
(510) 666-8248 ext 121 (tel:(510) 666-8248 ext 121)

Share Via:



(http